

APPENDIX F

EXISTING CONDITIONS MAPPING

DRAFT

[This page intentionally left blank]

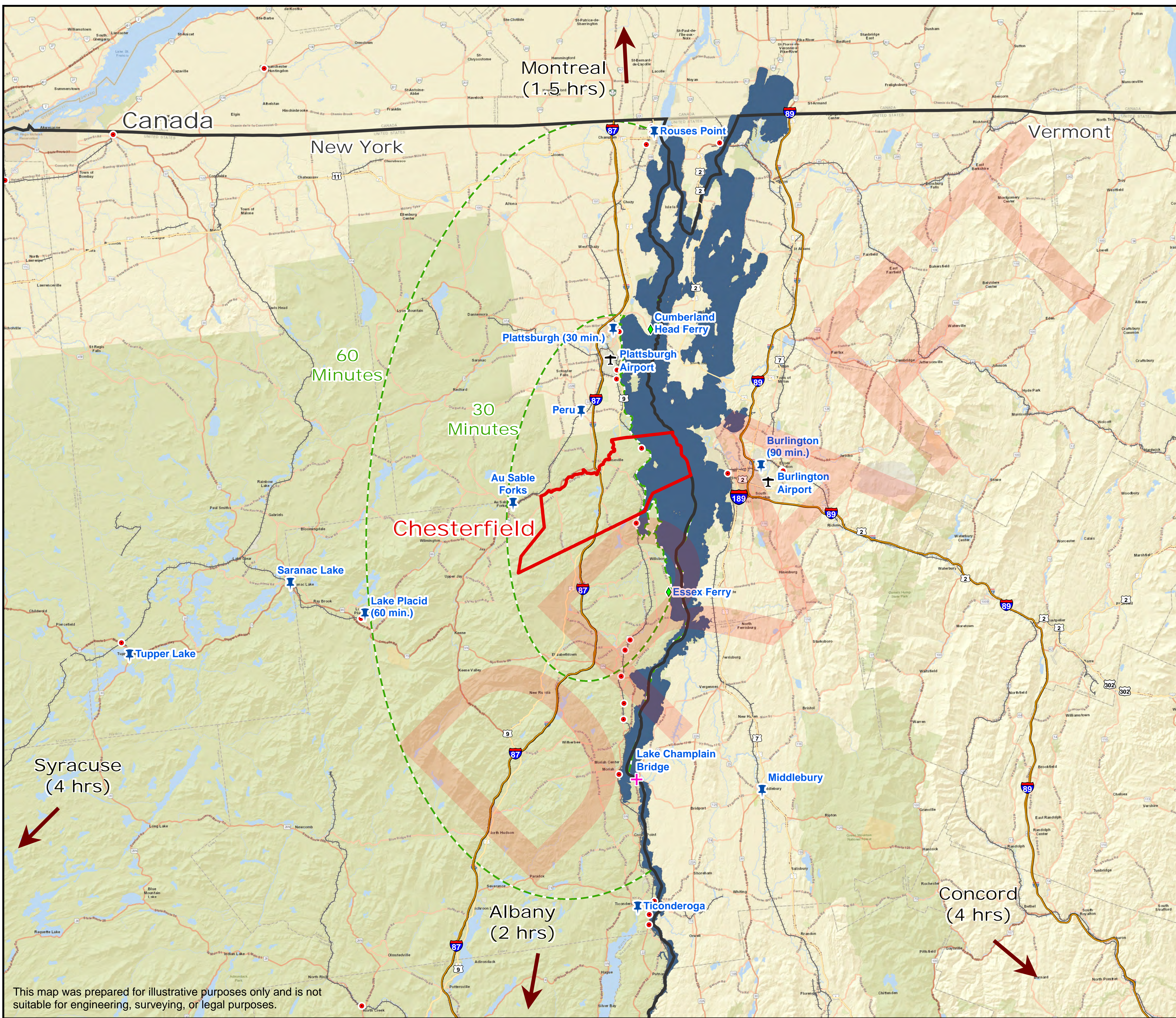


Town of CHESTERFIELD Comprehensive Plan

Regional Context
February 2025

LEGEND

- Study Area
- Travel Time (approx.)
- Interstates
- US Routes
- Railroad
- Lake Champlain
- Airport
- Bridge
- Community
- Ferry
- Railroad Station



Sources:
Esri, NYS ITS, DEC,
Essex County, Town of Chesterfield



This map was prepared for illustrative purposes only and is not suitable for engineering, surveying, or legal purposes.



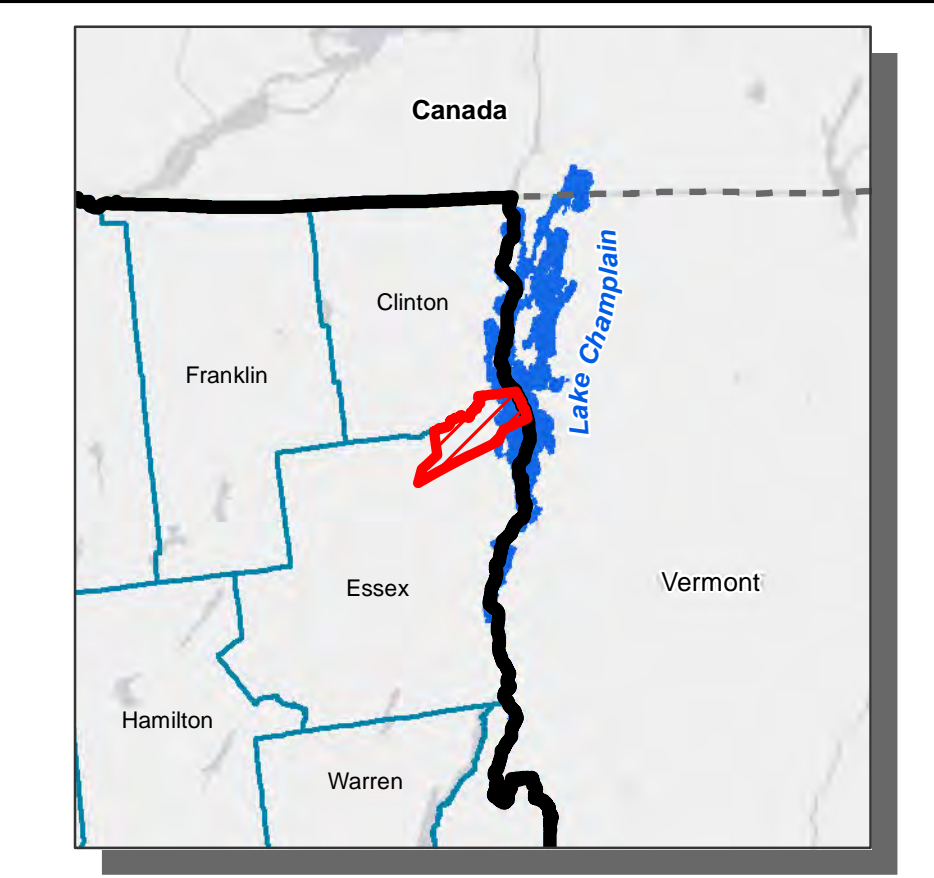
Town of CHESTERFIELD Comprehensive Plan

Existing Land Use February 2025

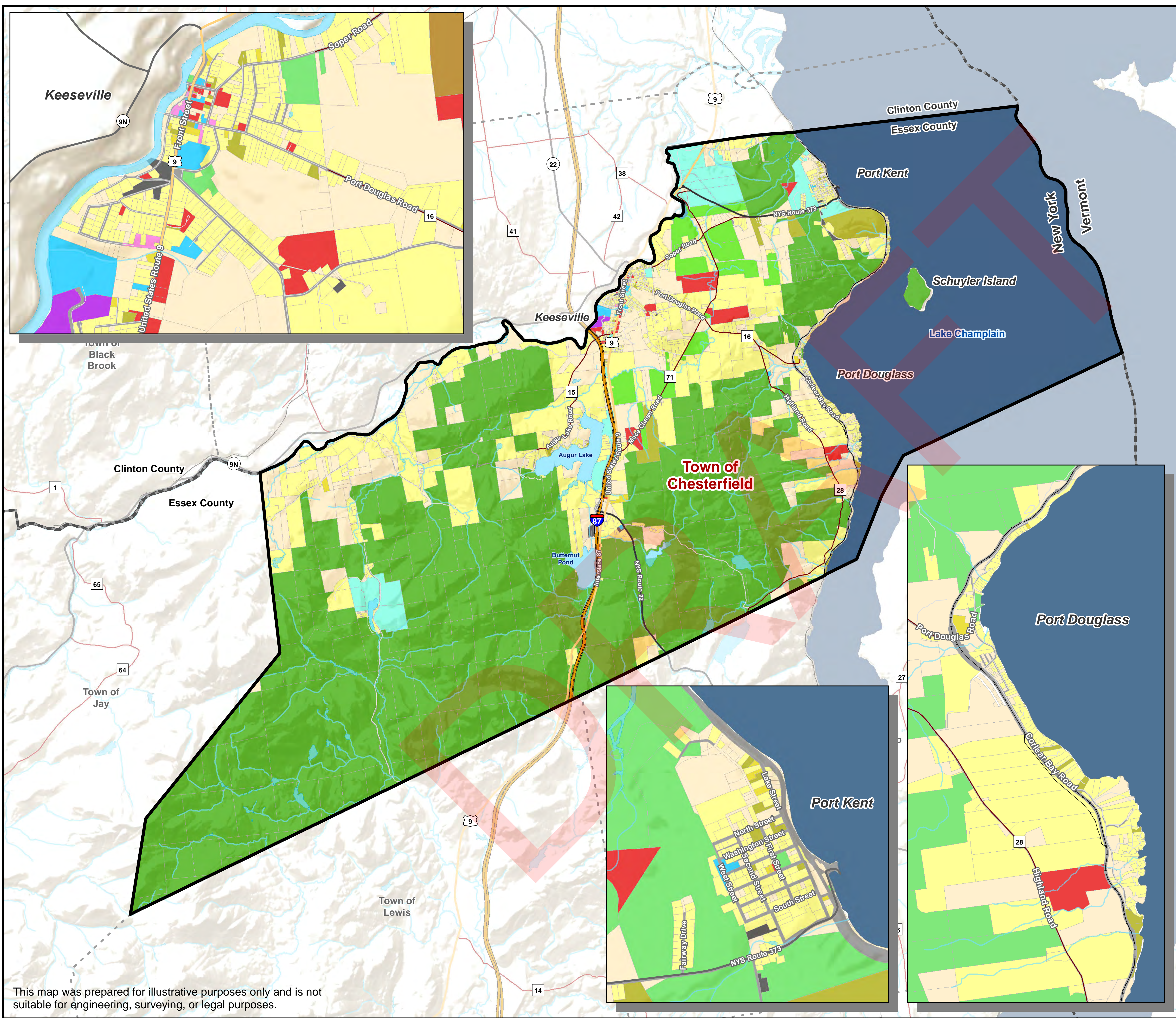
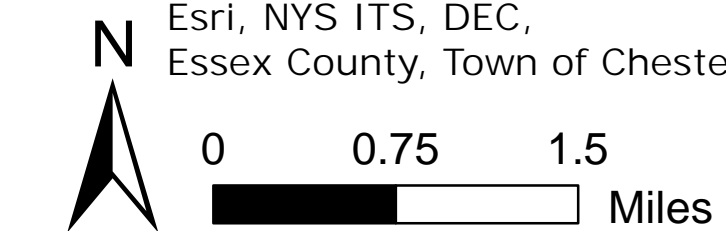
LEGEND

- Study Area
- Town Boundary
- County Boundary
- Interstates
- US Routes
- State Routes
- County Routes
- Local Roads
- Railroad
- Lake Champlain
- Waterbody
- River / Stream
- Agricultural
- Commercial
- Community Services
- Industrial
- Mixed Use
- Recreation & Entertainment
- Parks and Conservation
- Residential - High Density
- Residential - Medium Density
- Residential - Low Density
- Transportation
- Utilities
- Vacant Land

Land Use	Land Use Codes	Acreage	Percentage of Land Use
Agricultural	105-151	1,202.2	2.4%
Commercial	416-486	441.2	0.9%
Community Services	611-695	47.0	0.1%
Industrial	710	21.2	0.0%
Mixed Use	481, 483	5.0	0.0%
Parks & Conservation Lands	910-971	32,161.6	64.0%
Recreation & Entertainment	532-592	1,053.9	2.1%
Residential - High Density	230-281, 411	594.3	1.2%
Residential - Medium Density	215, 220	59.6	0.1%
Residential - Low Density	210, 240-283	8,160.6	16.2%
Transportation	842, 845	1,021.7	2.0%
Utilities	822-831, 874	56.8	0.1%
Vacant Land	311-331	5,400.6	10.8%
TOTALS		50,225.6	100%



Sources:
Esri, NYS ITS, DEC,
Essex County, Town of Chesterfield



This map was prepared for illustrative purposes only and is not suitable for engineering, surveying, or legal purposes.



Town of CHESTERFIELD Comprehensive Plan

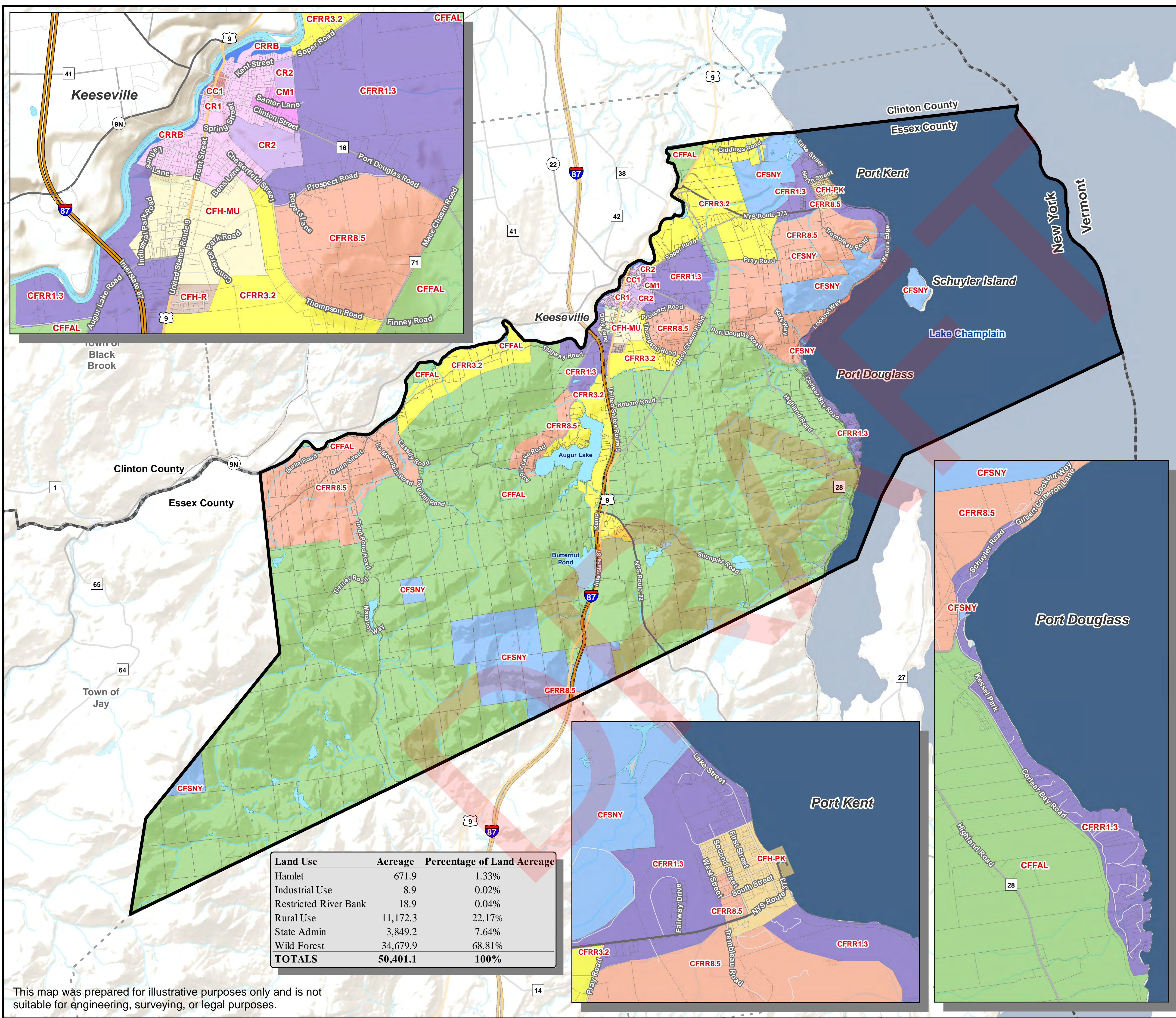
Existing Zoning February 2025

LEGEND

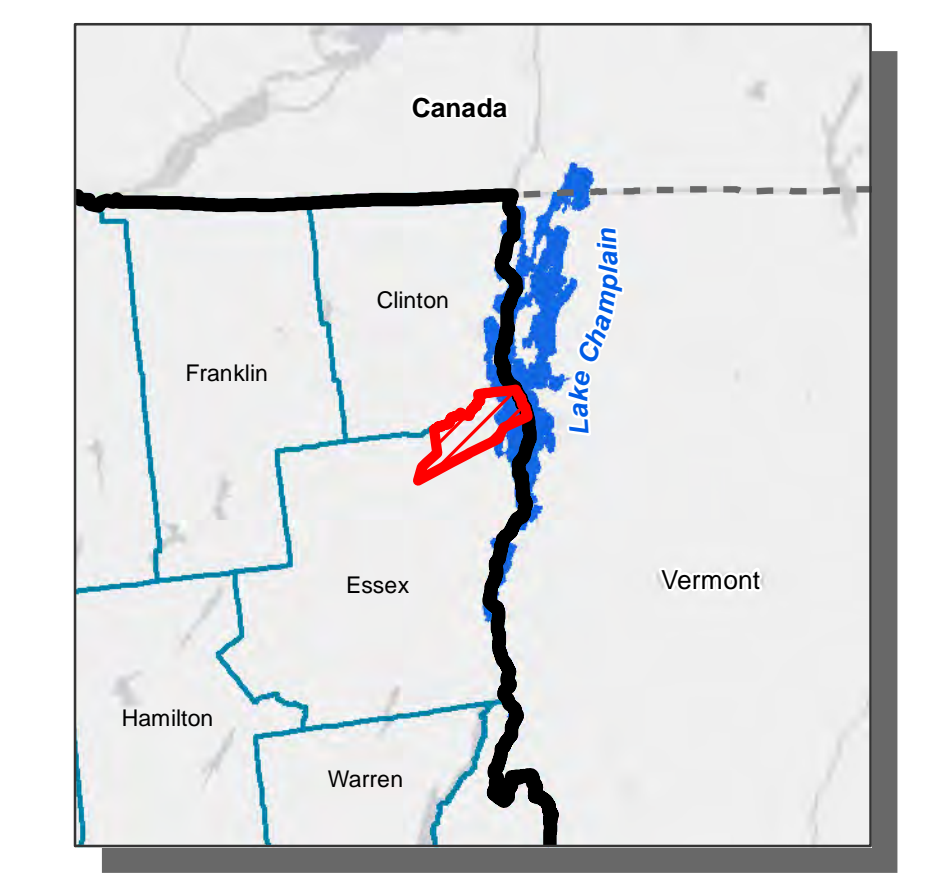
- Study Area
- County Boundary
- Town Boundary
- Lake Champlain
- Waterbody
- River / Stream
- Interstates
- US Routes
- State Routes
- County Routes
- Railroad

Zoning Code, Description

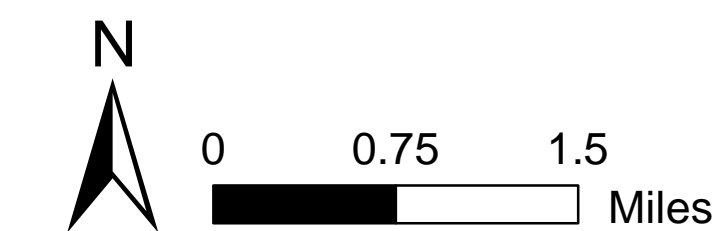
- CC1, Industrial Use
- CFRR8.5, Rural Use
- CFFAL, Wild Forest
- CFSNY, State Admin
- CFH-MU, Hamlet
- CM1, Hamlet
- CFH-PK, Hamlet
- CR1, Hamlet
- CFH-R, Rural Use
- CR2, Hamlet
- CFRR1.3, Rural Use
- CRRB, Restricted River Bank
- CFRR3.2, Rural Use



Land Use	Acreage	Percentage of Land Acreage
Hamlet	671.9	1.33%
Industrial Use	8.9	0.02%
Restricted River Bank	18.9	0.04%
Rural Use	11,172.3	22.17%
State Admin	3,849.2	7.64%
Wild Forest	34,679.9	68.81%
TOTALS	50,401.1	100%



Sources:
Esri, NYS ITS, DEC,
Essex County, Town of Chesterfield



This map was prepared for illustrative purposes only and is not suitable for engineering, surveying, or legal purposes.



Town of CHESTERFIELD Comprehensive Plan

APA Private and State Land Classification

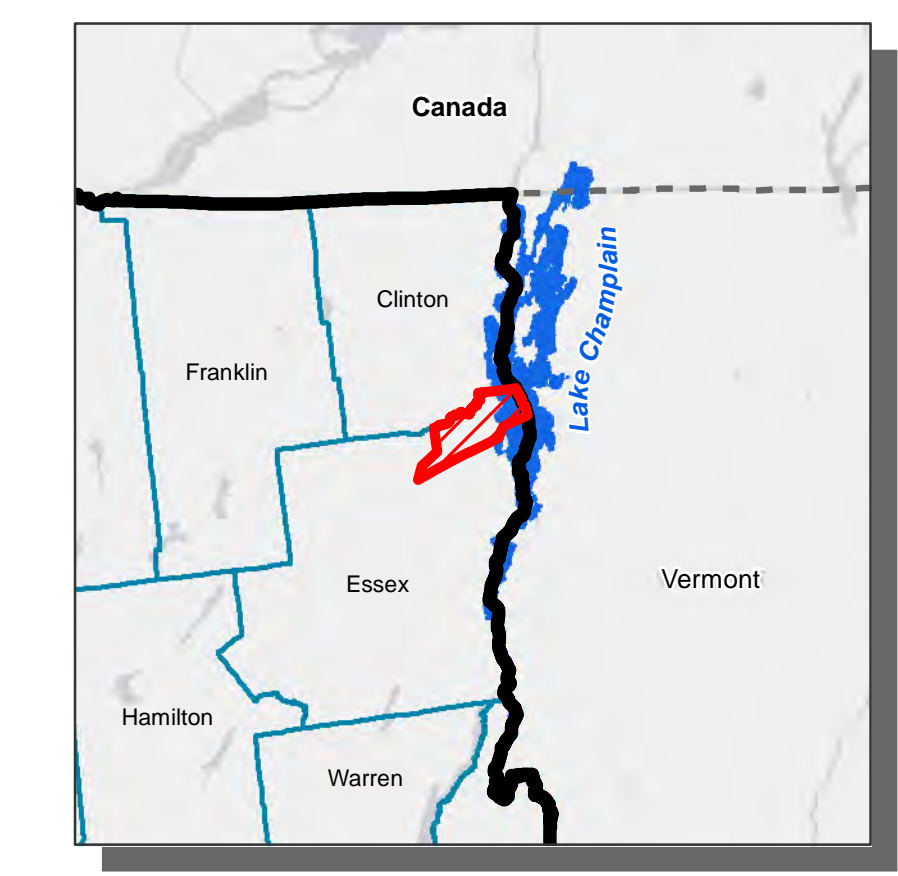
February 2025

LEGEND

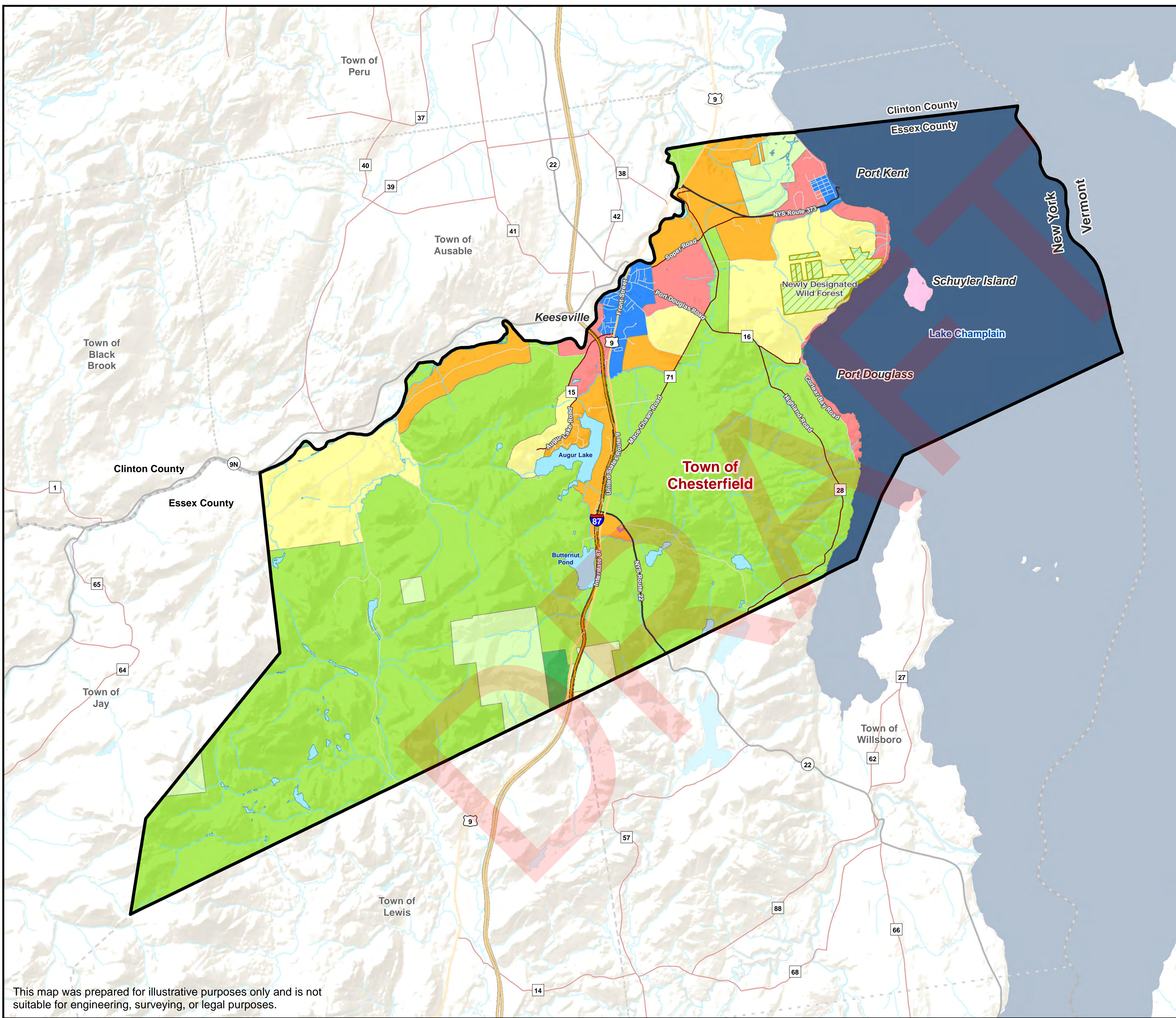
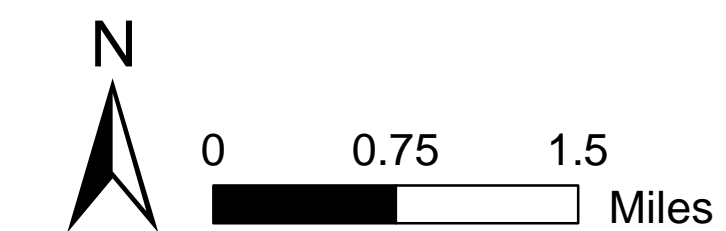
- Study Area
- Hamlet
- Interstates
- Moderate Intensity
- US Routes
- Low Intensity
- State Routes
- Rural Use
- County Routes
- Resource Management
- Local Roads
- Primitive Area
- Town Boundary
- Wild Forest
- County Boundary
- Intensive Use
- Lake Champlain
- State Administrative
- Waterbody
- Newly Designated Wild Forest *
- River / Stream

*Approximate boundary of newly designated Wild Forest provided by the Town (not yet included in APA mapping or table below)

APA Land Class	State or Private	Acree	Percentage of Land Area
Hamlet	Private	807.4	1.60%
Moderate Intensity	Private	2017.7	4.00%
Low Intensity	Private	3609.6	7.16%
Rural Use	Private	6086.2	12.06%
Resource Management	Private	34511.6	68.41%
Primitive Area	State	160.2	0.32%
Wild Forest	State	3001.8	5.95%
Intensive Use	State	247.4	0.49%
State Administrative	State	4.0	0.01%
TOTALS		50,445.9	100%



Sources: Esri, NYS ITS, DEC, APA, Essex County, Town of Chesterfield

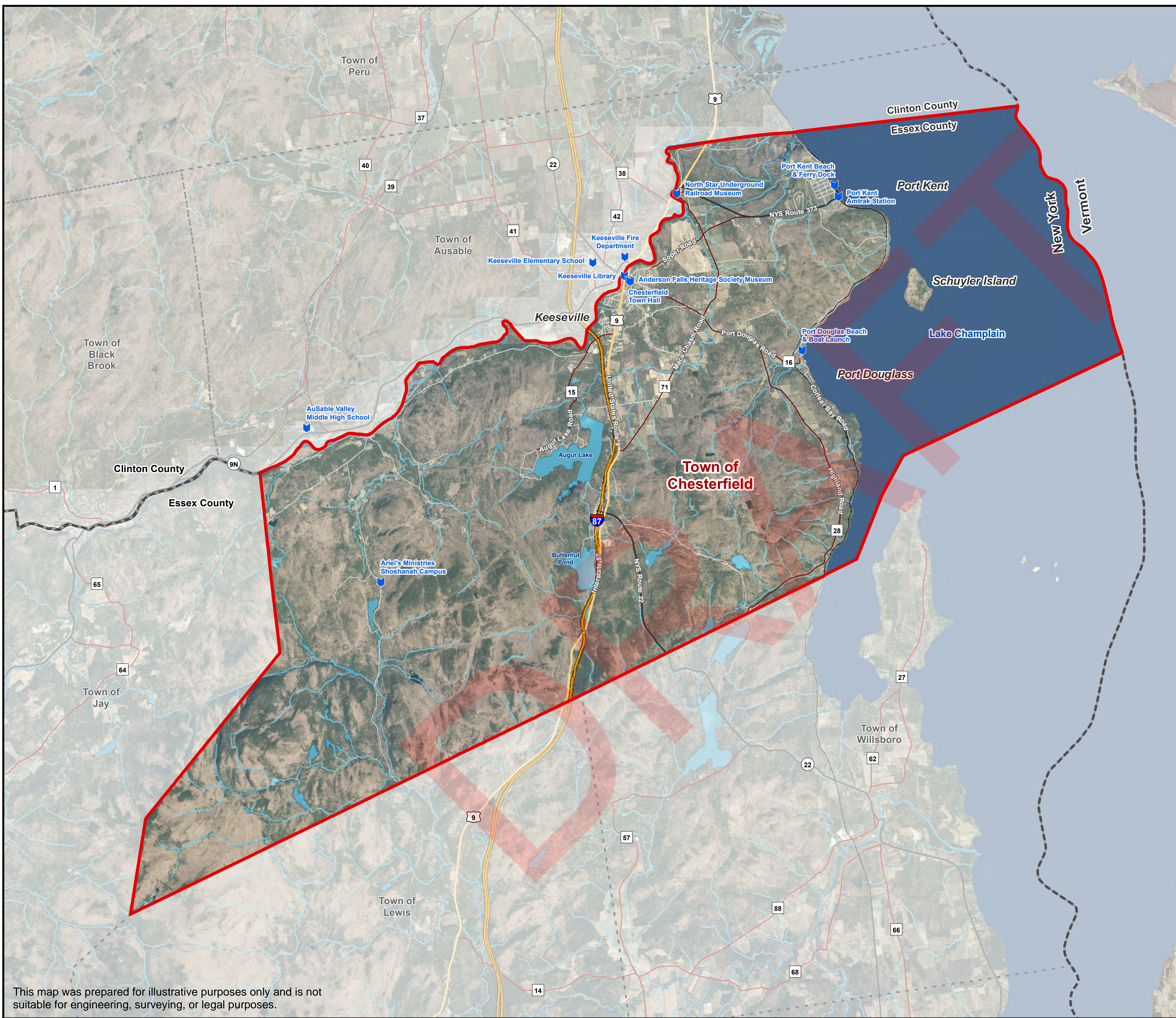


This map was prepared for illustrative purposes only and is not suitable for engineering, surveying, or legal purposes.



Town of CHESTERFIELD Comprehensive Plan

Community Services February 2025



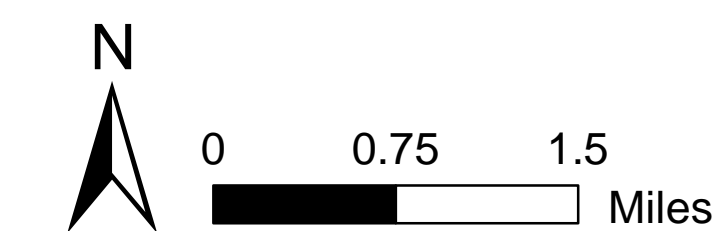
LEGEND

- Study Area
- Town Boundary
- County Boundary
- Interstates
- US Routes
- State Routes
- County Routes
- Local Roads
- Railroad
- Lake Champlain
- Waterbody
- River / Stream
- Town Points of Interest



This map was prepared for illustrative purposes only and is not suitable for engineering, surveying, or legal purposes.

Sources:
Esri, NYS ITS, DEC,
Essex County, Town of Chesterfield





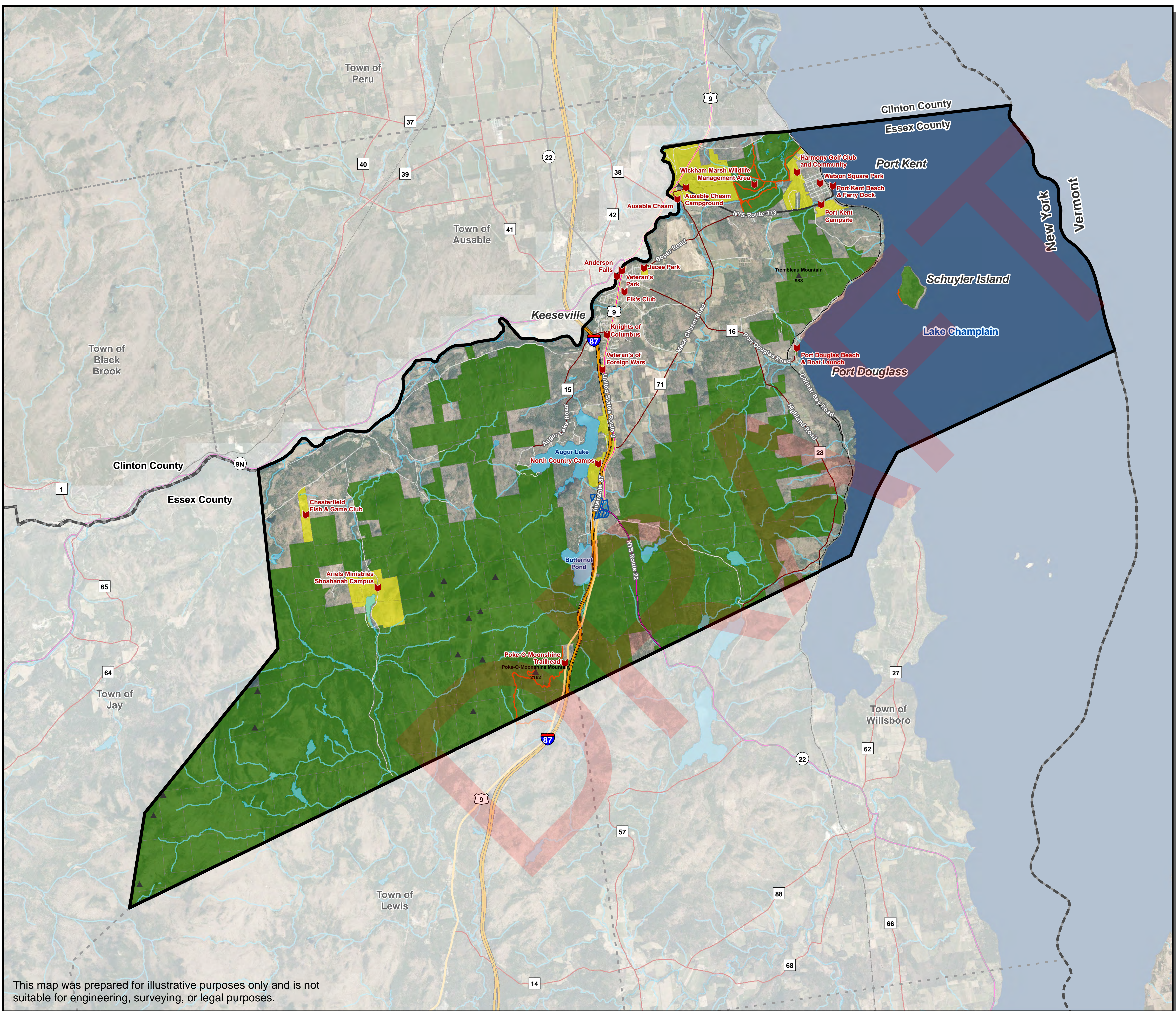
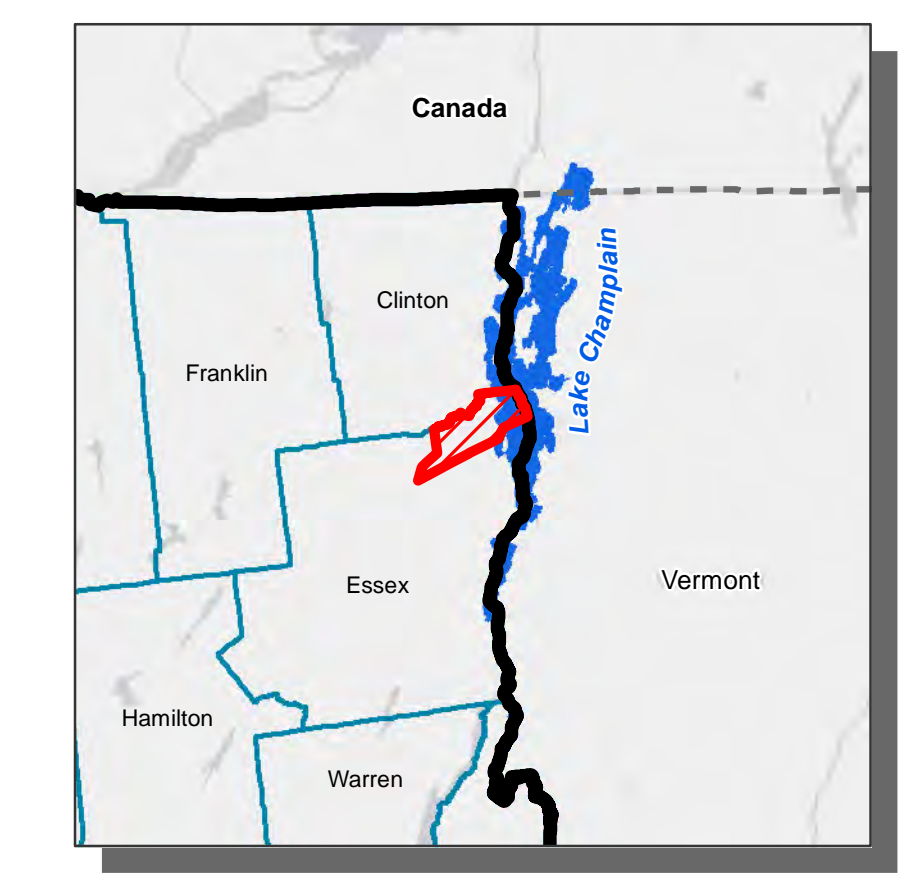
Town of CHESTERFIELD Comprehensive Plan

Parks and Recreation February 2025

LEGEND

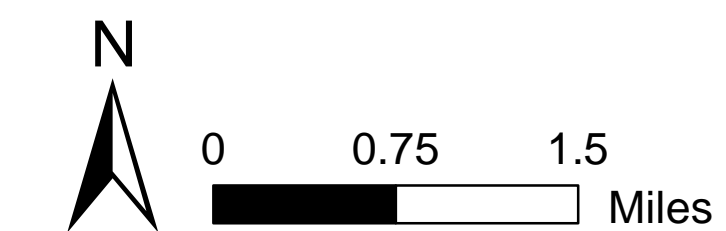
- Study Area
- Town Boundary
- County Boundary
- Interstates
- US Routes
- State Routes
- County Routes
- Local Roads
- Lake Champlain
- Waterbody
- River / Stream
- Summits
- Parks & Campsites
- Trails
- State Bike Route
- Conservation Easements
- Parks & Conservation
- Private Recreation

Land Use	Acreage	Percentage of Land Use
Parks & Conserved Lands	32163.70	48.64%
Private Recreation	354.25	0.54%



This map was prepared for illustrative purposes only and is not suitable for engineering, surveying, or legal purposes.

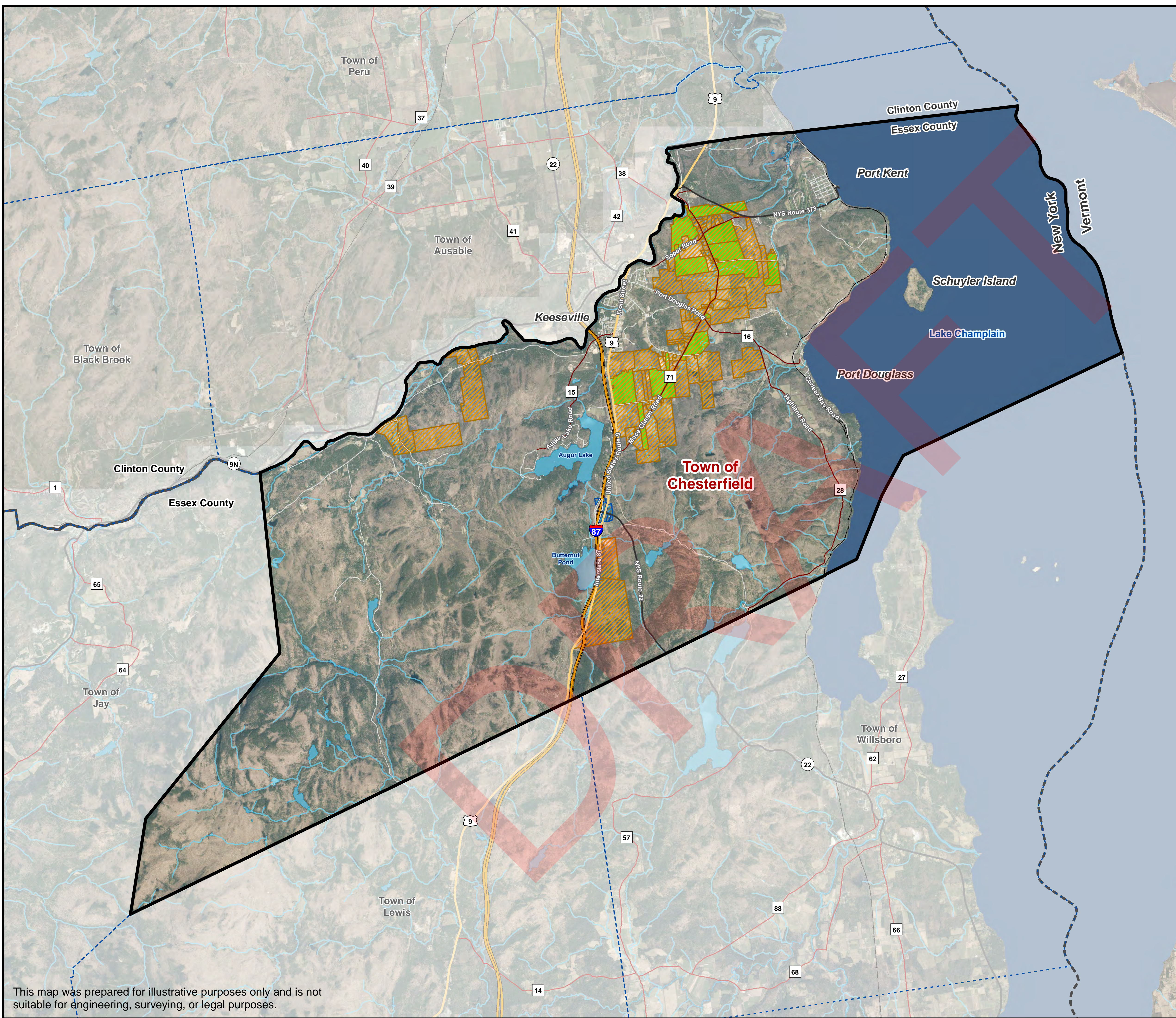
Sources:
Esri, NYS ITS, DEC,
Essex County, Town of Chesterfield





Town of CHESTERFIELD Comprehensive Plan

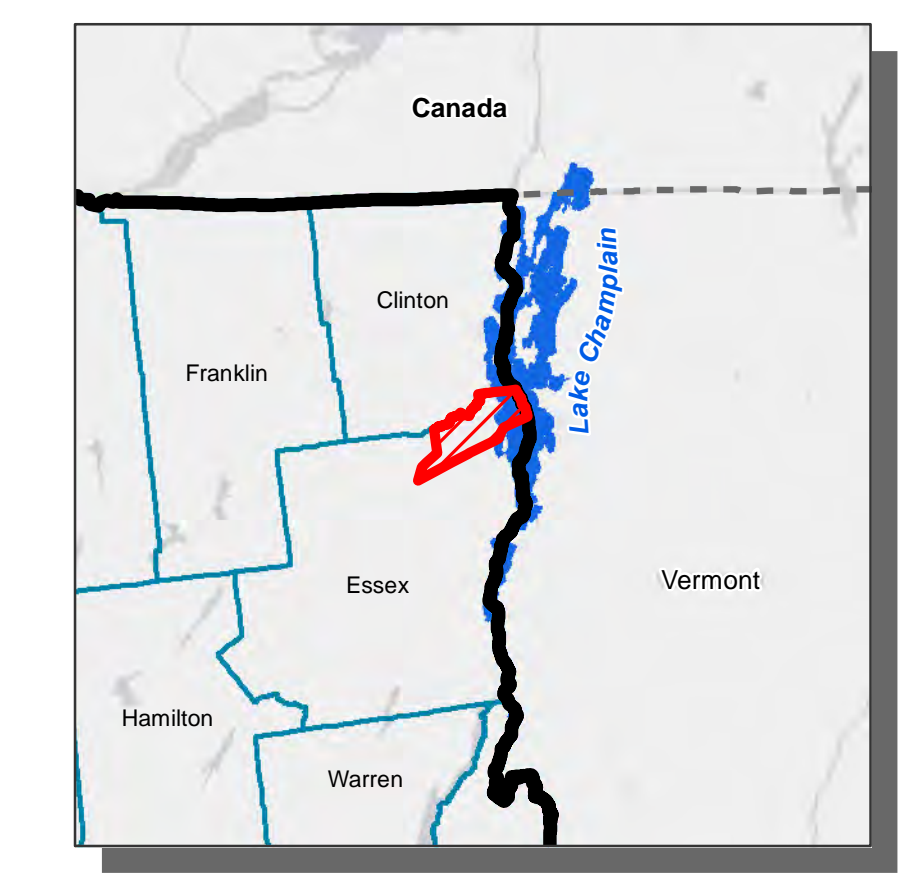
Agricultural Resources February 2025



LEGEND

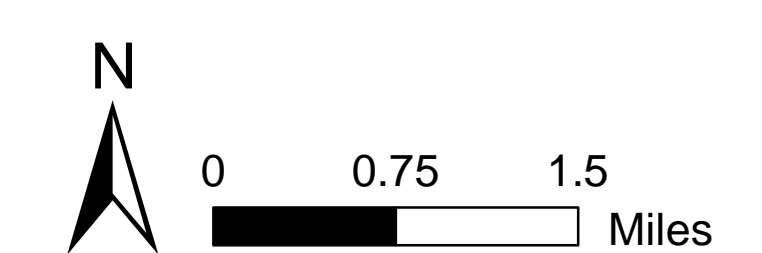
- Study
 - Town
 - County
 - US Routes
 - State
 - County
 - Local Roads
 - Lake Champlain
 - River / Stream
 - Agricultural District #1
 - Agricultural Land Use
 - State Owned Conservation Easements (APA)*
- * Other conservation easements, not owned by the state, are present within the study area but are not mapped.

Agricultural Districts	Acreage	Percentage of Land Use
Agricultural District #1	5254.8	10.46%
Conservation Easements	36.4	0.07%
Agricultural Land Use	1202.2	2.39%



This map was prepared for illustrative purposes only and is not suitable for engineering, surveying, or legal purposes.

Sources:
Esri, NYS ITS, DEC,
Essex County, Town of Chesterfield





Town of CHESTERFIELD Comprehensive Plan

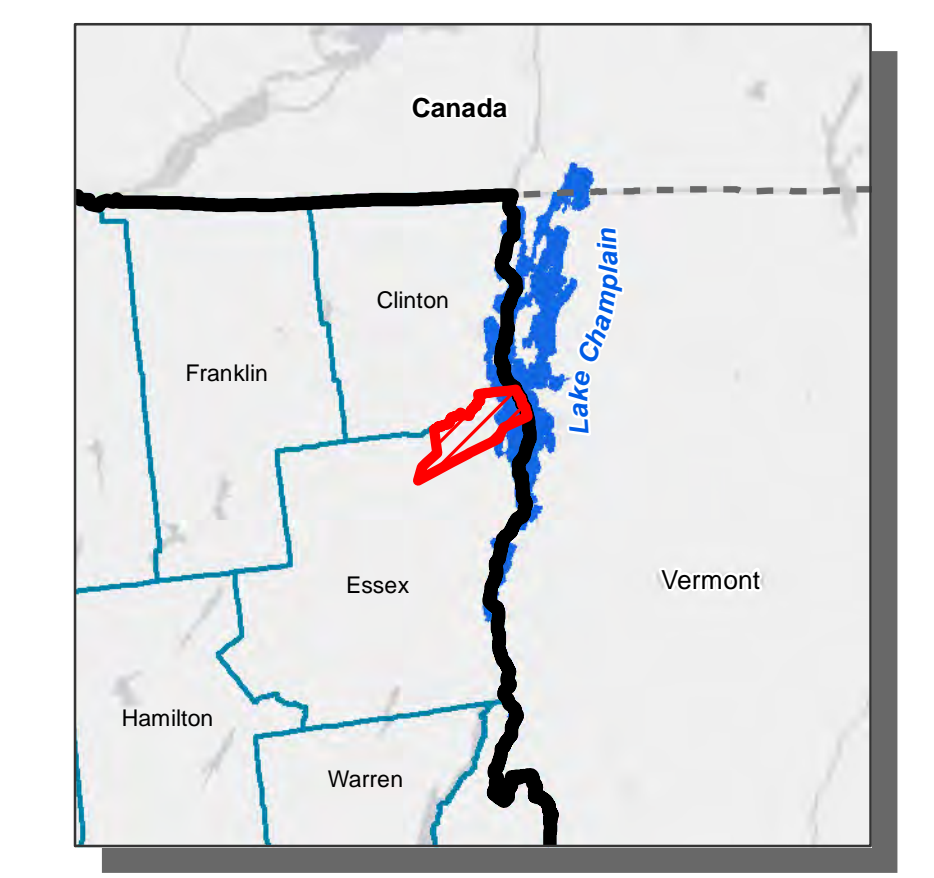
Environmental Constraints
February 2025

LEGEND

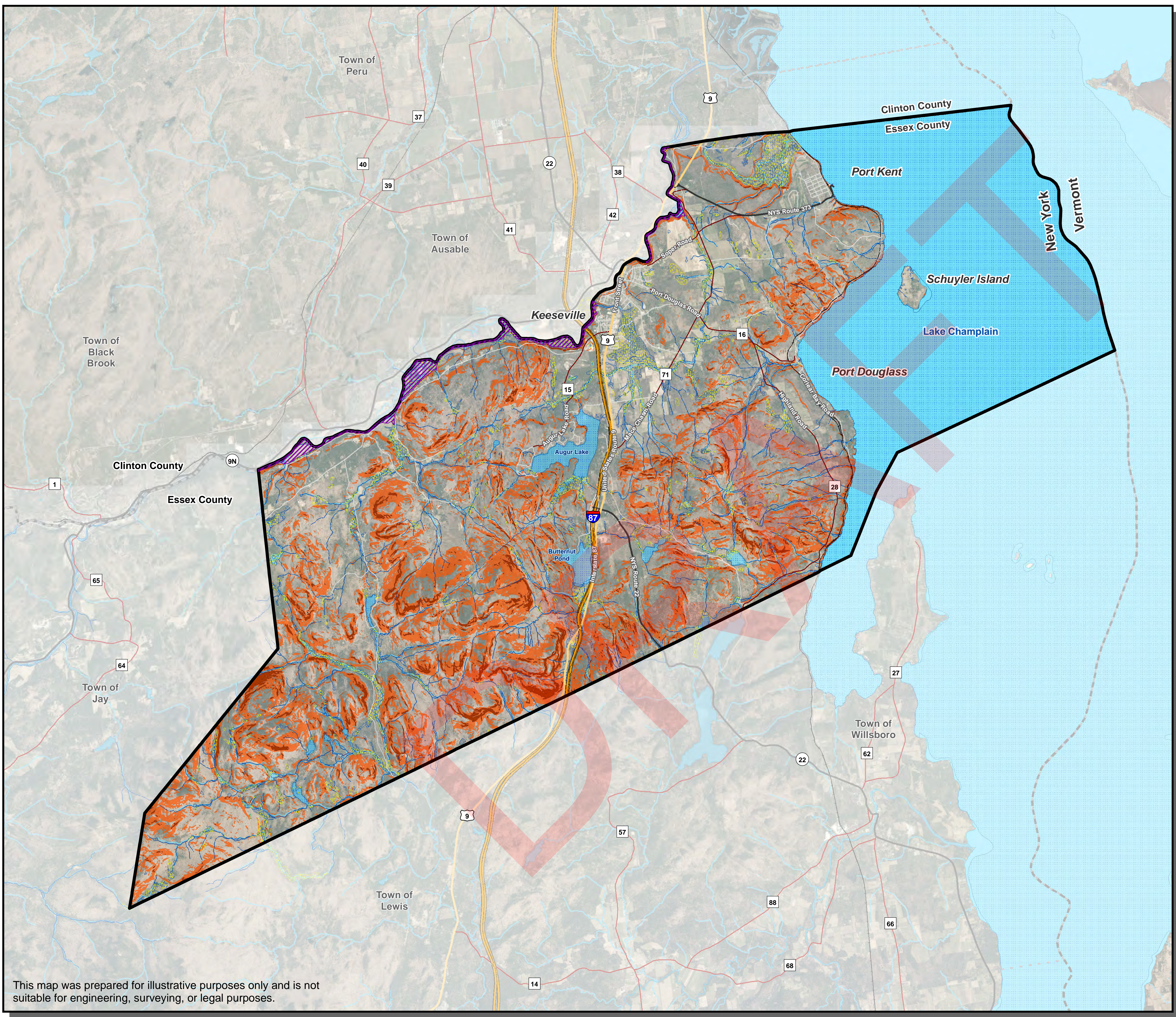
- Study Area
 - Town Boundary
 - County Boundary
 - Interstates
 - US Routes
 - State Routes
 - County Routes
 - Local Roads
 - Railroad
 - Waterbody
 - River / Stream
 - APA Regulated Wetlands
 - NWI Wetlands
 - *100-year Floodzone
 - Slopes > 30%
 - Slopes > 15%
- * 100-year Flood Boundary derived from 1987 FEMA FIRMs

Land Feature	Acreage	**Percentage of Land
APA Regulated Wetlands	2,466.2	4.79%
NWI Wetlands	5,098.2	9.90%
100-Year Floodzone	469.2	0.91%
Slopes > 30%	1,046.8	2.03%
Slopes > 15%	12,241.0	23.78%

** Percentage of Land includes all streams and water bodies except Lake Champlain



Sources:
Esri, NYS ITS, DEC, APA, NWI, FEMA
Essex County, Town of Chesterfield



This map was prepared for illustrative purposes only and is not suitable for engineering, surveying, or legal purposes.